

# Friends Tree Sale 2010

**Order by:**  
Saturday, April 17th

**Celebrating 25 Years**



**Pickup Date:**  
Saturday, May 1st, from 9AM to 1PM

**Pickup Sites:**  
Highland Park Pavilion, 1200 Montreal Ave., St. Paul  
Ramsey County Parks Garage, 2015 No. Van Dyke, Maplewood

## Trees

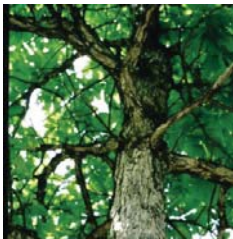


### Autumn Blaze Maple 5' bare root

**\$40.00**

This hybrid of silver and red maple inherited the best of both parents and is hugely popular because it has strong wind-resistant branches, needs little pruning, has a rapid growth, and tolerates both moist and dry soils. It is dependable and has beautiful

orange-red fall color. 2004 Urban Tree of the year. Mature height 50' spread 40'. <http://www.hort.wisc.edu/mastergardener/features/woodies/abmaple/abmaple.htm>



### Bicolor White Oak 5 gal container

**\$45.00**

This native oak thrives in either wet or upland soils and is more adaptable than most oaks to varied soil conditions. Fall foliage is yellow-brown to red. It is a

rounded shade tree noted for its bicolored foliage as the breeze rustles the leaves showing the light underside contrasting to the darker upper side of the leaf. It has good winter interest with ornamental bark and bold texture against the snow and winter sky. 1999 "Great Plants for the Great Plains" award winner. Medium growth rate to a mature height 50-60', spread 40-50'. <http://www.mobot.org/gardeninghelp/plantfinder/Plant.asp?Code=Q330>



### Black Hills Spruce 5 gal container (18")

**\$35.00**

This shapely "Christmas tree" is one of the best known members of the spruce family. It is noted for its hardiness, to zone 3, and its short bluish foliage. It shears easily to make a specimen, hedge or windbreak. It is a good choice for wildlife as dense branching

provides good cover for wildlife including nesting for birds. Mature height 35-45'. <http://www.mn.nrcs.usda.gov/partners/maswcd/Rock/black.htm>

## Small/Mid-Size Trees



### Pagoda Dogwood 3' # 5 container

**\$35.00**

An excellent small tree with a unique horizontally layered branching which give it a prized shape in both summer and winter.

It has flat clusters of small white flowers in spring. Small blue-black berries add color in summer and provide food for native birds. Fall foliage is deep burgundy. It is ideal where height restrictions like power lines are an issue. Needs water during drought. Hardy to zone 3. Mature height 15- 25', width 10-12'. <http://www.mnpower.com/treebook/fact24.html>



### Thornless Cockspur Hawthorn #7 container

**\$45.00**

Small ornamental tree with interesting horizontal branching that has abundant white flowers in June followed by small bright red persistent fruit in autumn. It prefers moist conditions but is drought tolerant. It is a favorite of birds and butterflies. Fall foliage is orange. Requires little pruning. It is an excellent specimen tree in a small yard. Mature height and spread 15-20'. <http://www.colostate.edu/Dept/CoopExt/4dmg/Trees/thrnless.htm>



### Mount Royal Plum 7/8" diameter bare root

**\$25.00**

The blue-black-skinned fruit of this plum tree is good eaten right off the tree or used in jam, and preserves. It is self-fertile so only one tree is needed for good production. Hardy in the Twin Cities and south. Height 8-12'. <http://www.extension.umn.edu/yardandgarden/YGLNews/YGLN-May1503.html>

Join us and become a member at : [www.FriendsoftheParks.org](http://www.FriendsoftheParks.org)



# Fruit Trees Continued



**Honeycrisp Apple**  
5' bare root

\$25.00

Developed at the University of Minnesota, this apple has become a Minnesota favorite. Exceptionally crisp and juicy, the Honeycrisp has excellent storage life. It ripens in late September to early October. Apples require spraying during the pinkbud stage and dropped apples must be cleaned up to prevent pests and disease. Dwarf. Mature height/spread 9-12'. [http://www.extension.umn.edu/distribution/horticulture/components/5877\\_01.html](http://www.extension.umn.edu/distribution/horticulture/components/5877_01.html)

## Shrubs



**Arrowwood Viburnum**  
2' bare root

\$15.00

This tough native shrub has straight stout stems once used to make arrows. Today it is valued for white spring flowers, striking glossy red fall color and bird-friendly black berries. It can tolerate a range of soils, including wet and dry and will grow in full sun to full shade. Remove suckers to keep it within a small area. It is a favorite of birds and butterflies. Mature height and width 6-15'. <http://www.ag.ndsu.edu/trees/handbook/th-3-61.pdf>



**Little Lamb Hydrangea**  
18" bare root

\$15.00

Little Lamb is compact with huge flower panicles are comprised of tiny delicate florets that are tightly packed to form a spectacular white flower regardless of PH. Prefers moist, well-drained soil in full sun or partial shade. It yields excellent cut flowers over a long season and flowers can be dried. Mature height and spread 6-8'. [http://www.colorchoiceplants.com/little\\_lamb.htm](http://www.colorchoiceplants.com/little_lamb.htm)



**Blue Velvet Hypericum**  
#1 container

\$15.00

A low mounded shrub with attractive blue velvet aromatic leaves that fill the garden with their beautiful scent. Covered with golden-yellow flowers from June through September, its late season display of bright red berries make it a autumn delight. Low maintenance and prefers full sun to light shade. Can be used as a specimen, hedge, or in mass planting. Mature height and spread 2-3'. <http://www.greenwoodnursery.com/page.cfm/47364>



**Miss Canada Lilac 12"**  
bare root

\$15.00

Attractive rounded lilac that blooms later than most lilacs. Its leaves are larger and have a unique shape. Resists fall mildew. Flower panicles are huge and the truest pink of any lilac. Very photogenic. Mature height 6-9'. <http://www.cornhillnursery.com/retail/shrub/lmisscanada.html>



**Hope for Humanity**  
shrub rose #2 container

\$20.00

Double dark red ever-blooming rose will be in full bloom when you pick it up! The lustrous foliage has good disease resistance. Needs no winter protection but will require some spring pruning. Apply a time release fertilizer for spectacular results. Mature height and spread 2-4'. [http://www.canadianrosesociety.org/index.php?option=com\\_content&view=article&id=90&Itemid=55](http://www.canadianrosesociety.org/index.php?option=com_content&view=article&id=90&Itemid=55)



**Wisteria Aunt Dee** 2 yr.  
1 gal. container

\$15.00

Banish zone envy with this fully hardy wisteria vine which rivals any of its southern cousins. Clusters of light purple sweet pea like flowers hang in glorious profusion in May and may re-bloom. Prefers full sun. Do not attempt a flimsy support for this robust grower! Length to 40' <http://members.shaw.ca/pctpictures2/wisteriaauntdee.htm>.

Name \_\_\_\_\_ Address \_\_\_\_\_  
Phone \_\_\_\_\_ E-mail \_\_\_\_\_

**Remember your date, time and location**

I will pick up at 2015 N. Van Dyke in Maplewood (near Aldrich Arena.)   
I will pick up at 1200 Montreal in St. Paul.

	Number	Price	Total	Gift to Park	
Autumn Blaze Maple *	_____	\$40	_____	YES	NO
Bicolor White Oak *	_____	\$45	_____	YES	NO
Black Hills Spruce	_____	\$35	_____	YES	NO
Pagoda Dogwood *	_____	\$35	_____	YES	NO
Thornless Cockspur Hawthorn	_____	\$45	_____	YES	NO
Mount Royal Plum	_____	\$25	_____		
Honeycrisp Apple	_____	\$25	_____		
Arrowwood Viburnum *	_____	\$15	_____		
Little Lamb Hydrangea	_____	\$15	_____		
Blue Velvet Hypericum	_____	\$15	_____		
Miss Canada Lilac	_____	\$15	_____		
Hope For Humanity Rose **	_____	\$20	_____	YES	NO
Wisteria Aunt Dee	_____	\$15	_____		
		<b>TOTAL \$</b>	_____		



**You are invited to donate trees for public parks in the following communities:**  
Ramsey County Parks and: Apple Valley, Arden Hills, Blaine, Brooklyn Park, Cottage Grove, Eagan, Falcon Heights, Lauderdale, Little Canada, Maplewood, Mendota Heights, North Saint Paul, Roseville, Saint Louis Park, Saint Paul, Shoreview, Vadnais Heights, White Bear Lake, White Bear Township and Woodbury.  
**I would like to contribute these trees to be planted in this park system:**

Trees given to a park will be picked up and planted by park staff.  
**Gifts to parks are fully tax deductible.**

**April 17 deadline for orders.**  
Orders must be placed and prepaid by Saturday, April 17. **Make checks payable to: Friends of the Parks, mail to: 1621 Beechwood Ave. St. Paul, MN 55116.** Call 651-698-4543 or visit [www.FriendsoftheParks.org](http://www.FriendsoftheParks.org) for more information.

\* Native

\*\* Only the Saint Paul Park system accepts the Hope For Humanity rose as a gift.

We'd gladly accept a \$5 donation to help pay for water bags for park trees.

Join us and become a member at : [www.FriendsoftheParks.org](http://www.FriendsoftheParks.org)